



Bailey Street, London, SE8 5EU

Beautifully presented and naturally bright one bedroom apartment in ever-so-popular Greenland Place. With underfloor heating throughout, the property boasts a spacious open plan living area leading into the private balcony, a contemporary kitchen with all mod cons, a stylish bathroom, and a large bedroom with generous built-in-wardrobe.

The apartment also benefits from three spacious cupboards with plenty of storage space in the hallway. Just a few steps from their front doors, residents can enjoy a state of art fitness facility alongside a 24 hr concierge.

Onsite benefits include two grocery stores and a plethora of independent boutique shops and cafes on your doorstep.

Council Tax Band: B

£1,950 Per month

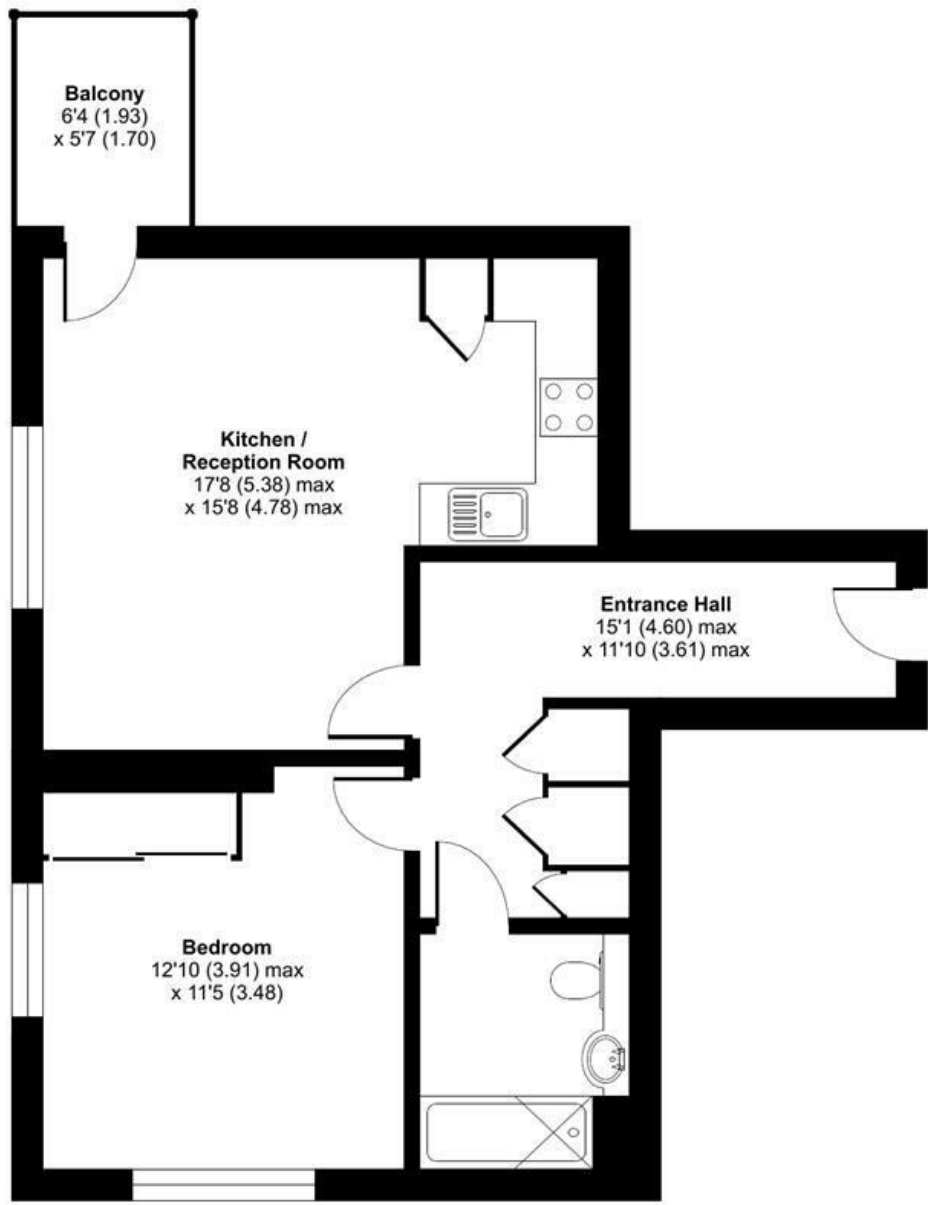
- Modern Apartment
- 14th Floor
- Stunning Views
- Private Balcony
- Contemporary Kitchen
- Plenty of Storage Space
- Plethora of Local Amenities on your Door Step
- 24hr Concierge and Gym

Alex & Matteo
ESTATE AGENTS

Bailey Street, London, SE8

Approximate Area = 566 sq ft / 52.6 sq m

For identification only - Not to scale



FOURTEENTH FLOOR

Alex & Matteo
ESTATE AGENTS



Certified
Property
Measurer

Floor plan produced in accordance with RICS Property Measurement Standards incorporating International Property Measurement Standards (IPMS2 Residential). © nitchcom 2022. Produced for Alex & Matteo Estate Agents. REF: 913445

Energy Efficiency Rating		
	Current	Potential
Very energy efficient - lower running costs		
(92 plus) A		
(81-91) B	84	84
(69-80) C		
(55-68) D		
(39-54) E		
(21-38) F		
(1-20) G		
Not energy efficient - higher running costs		
England & Wales		
EU Directive 2002/91/EC		